

JUKI®

Much more than just a SAB system

SIDE AIRBAG
DOCUMENTATION
EQUIPMENT

SADE

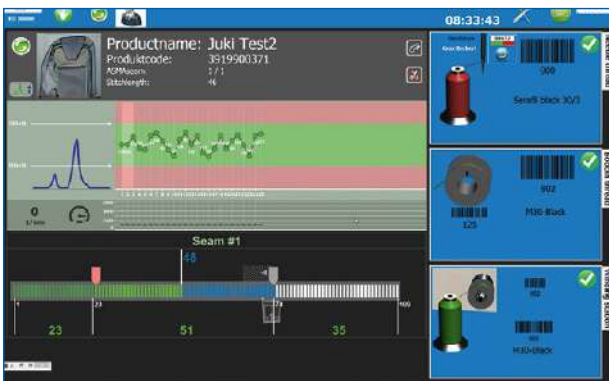


FULL CERTIFIED BY ALL MAJOR AUTOMOTIVE COMPANIES

SADE



The safety of passengers is a concern for all automobile manufacturers and the inclusion of airbags allows for greater protection in a collision. In case of an accident the airbags integrated into the seat covers, door panels or car fittings have to break through in a specifically defined seam. This safety-relevant seam must be strong enough to resist stress under normal conditions but at the same time it must guarantee the unrestricted, accurate exit of the airbag if it is needed.



MONITORING AND DOCUMENTATION OF ALL SEWING DATA

- FULL TRACEABILITY
- MATERIAL
- STITCH LENGTH
- STITCH COUNTING
- SEAM LENGTH
- THREAD TENSION
- USER
- DATE AND TIME
- MULTIPLE SEAM SECTIONS
- RECORD OF EXPLOSION MODULE
- AND MANY MORE



INDUSTRY 4.0 READY

- INTEGRATED WEBSERVER
- FULL NETWORK CAPABILITY
- MULTIPLE LANGUAGE SOFTWARE
- SQL DATABASE
- DIFFERENT WORKSTATIONS AVAILABLE

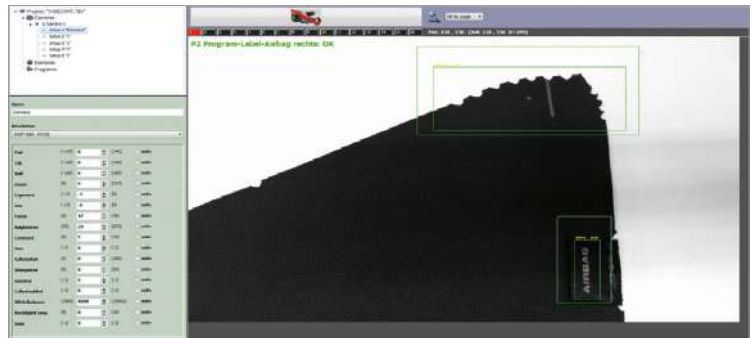
SAFETY AND SECURITY IS OUR GOAL



POWERFUL IMAGE ANALYSIS MODULES AVAILABLE

CHECK OF:

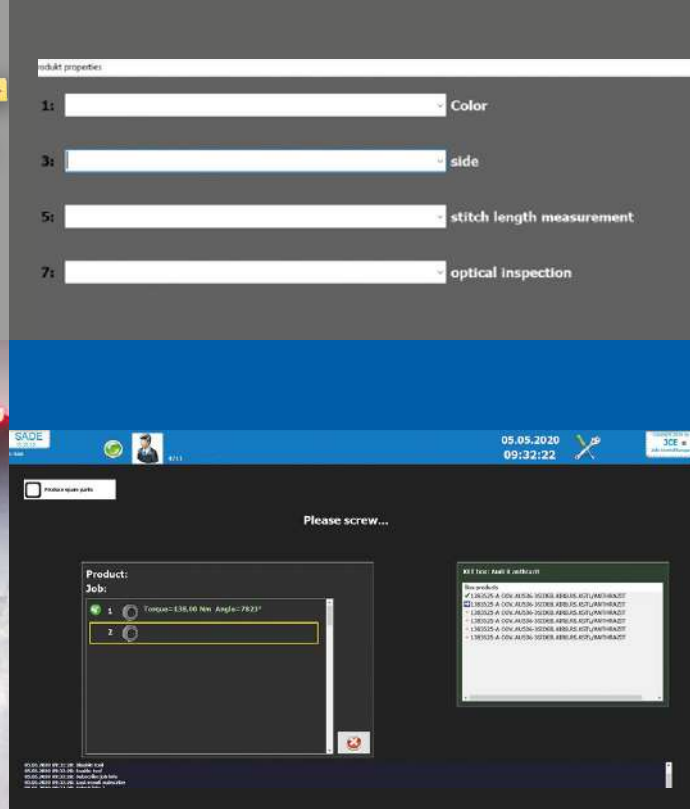
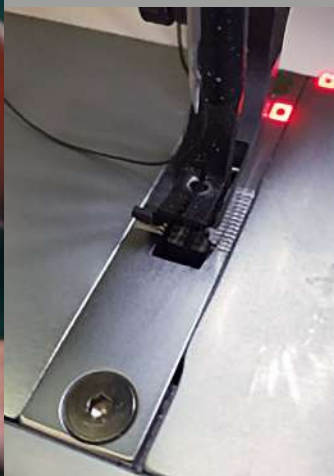
- TEXT
- SHAPES
- COLORS



CUSTOMIZABILITY

- CUTTING ROOM TERMINAL
- ENGINEERING OFFICE TERMINAL
- QUALITY CONTROL TERMINAL
- IMAGE ANALYSIS MODULE
- EDGE CONTROL SEWING MODULE
- ELECTRIC/PNEUMATIC SCREW DRIVER MODULE
- BATCH CONTROL MODULE
- FREE LABEL GENERATOR
- FREE REPORT GENERATOR
- TRACEABILITY OF MACHINE RUNNING TIME





WHEN ORDERING

S A D E / L 5 2 D

0	N/A
F	Finger print unit

S	Standard cone stand
C	Cone box unit + Electric lock

K	Single-phase 200-240V (For general export)
S	Single-phase 100-120V
D	3-phase 100-120V

2	LU2810VA70BBSF/X73241-BB
3	LU2828VA7NBBSF-BB

J00521056 CAMERA DEVICE
 40216973 DIGITAL EDGE ALL ASM
 Skip stitch device (is included)
 Remaining bobbin thread is included

www.jukieurope.com

JUKI Smart Solutions
 Innovation with our Best Global Support

JUKI CENTRAL EUROPE Sp.z o.o.
 ul. Poleczki 21/Platan Park C
 02-822 Warsaw, Poland